



# St. Francis Xavier Church

---

## MOUNT WASHINGTON, KENTUCKY



# Town Hall Meeting Feb. 7, 2021





# AGENDA

---

- ❖ Opening Prayer and Thanks (Father Dale Cieslik, Pastor)
- ❖ Opening Remarks (Mitchell Elder, Chairperson of the Steering Committee)
- ❖ Project Description - JRA Architects  
Wehr Constructors
- ❖ Construction Schedule & Staging - Wehr Constructors
- ❖ Questions / Comments
- ❖ Closing Prayer (Father Dale Cieslik, Pastor)





# Aerial View of Site - Existing



44

HWY. 44

EXISTING  
PARKING

CHURCH

STRINGER LANE

RELIGIOUS  
EDUCATION  
BUILDING

EXISTING  
PARKING

PARISH  
HALL

PARISH OFFICE

155 Stringer Ln

EXISTING  
PARKING

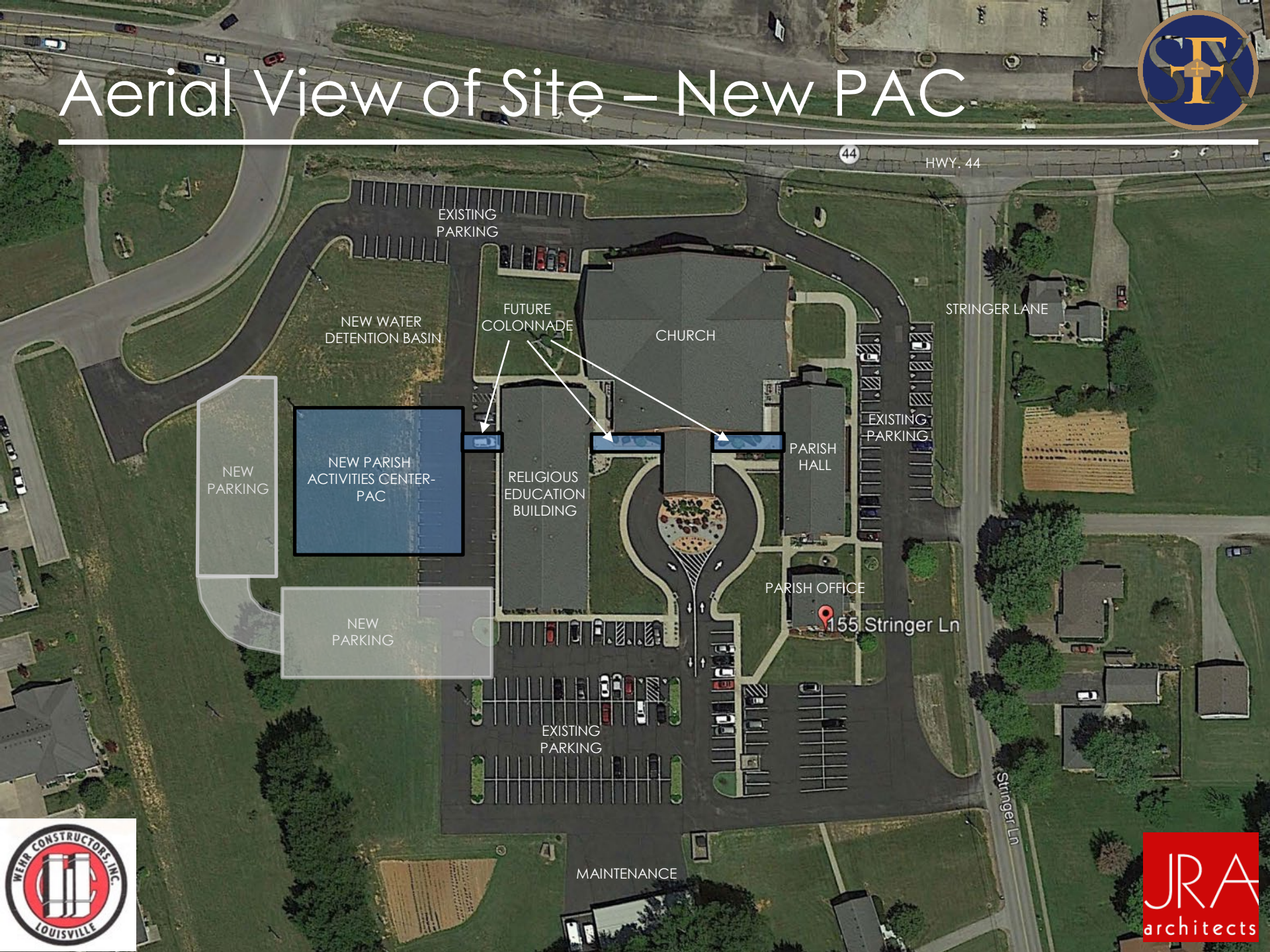
MAINTENANCE

Stringer Ln





# Aerial View of Site – New PAC



44

HWY. 44

EXISTING  
PARKING

NEW WATER  
DETENTION BASIN

FUTURE  
COLONNADE

CHURCH

STRINGER LANE

NEW  
PARKING

NEW PARISH  
ACTIVITIES CENTER-  
PAC

RELIGIOUS  
EDUCATION  
BUILDING

PARISH  
HALL

EXISTING  
PARKING

NEW  
PARKING

PARISH OFFICE

155 Stringer Ln

EXISTING  
PARKING

MAINTENANCE

Stringer Ln





# Site Features

---

- ❖ Net gain of 3 parking spaces.
- ❖ Access from lot to overhead door to Gym space.
- ❖ Outside Fish Fry area adjacent to Kitchen, with walk-up sales window.
- ❖ Landscaping included.
- ❖ Future Playground area.
- ❖ Future Colonnade to connect to Religious Education Building, Church & Parish Hall.





ADRIAN AVE.

DETENTION BASIN

REMOVE EXISTING DRIVE AND PARKING LOT

COLONNADE CONNECTOR (FUTURE)

EXISTING CH

17 SPACES

155'-6 1/4"

FUTURE PLAYGROUND

FISHERY

FUTURE WALK-IN (N.I.C.)

EXISTING RELIGIOUS EDUCATION BUILDING

COLONNADE CONNECTOR (FUTURE)

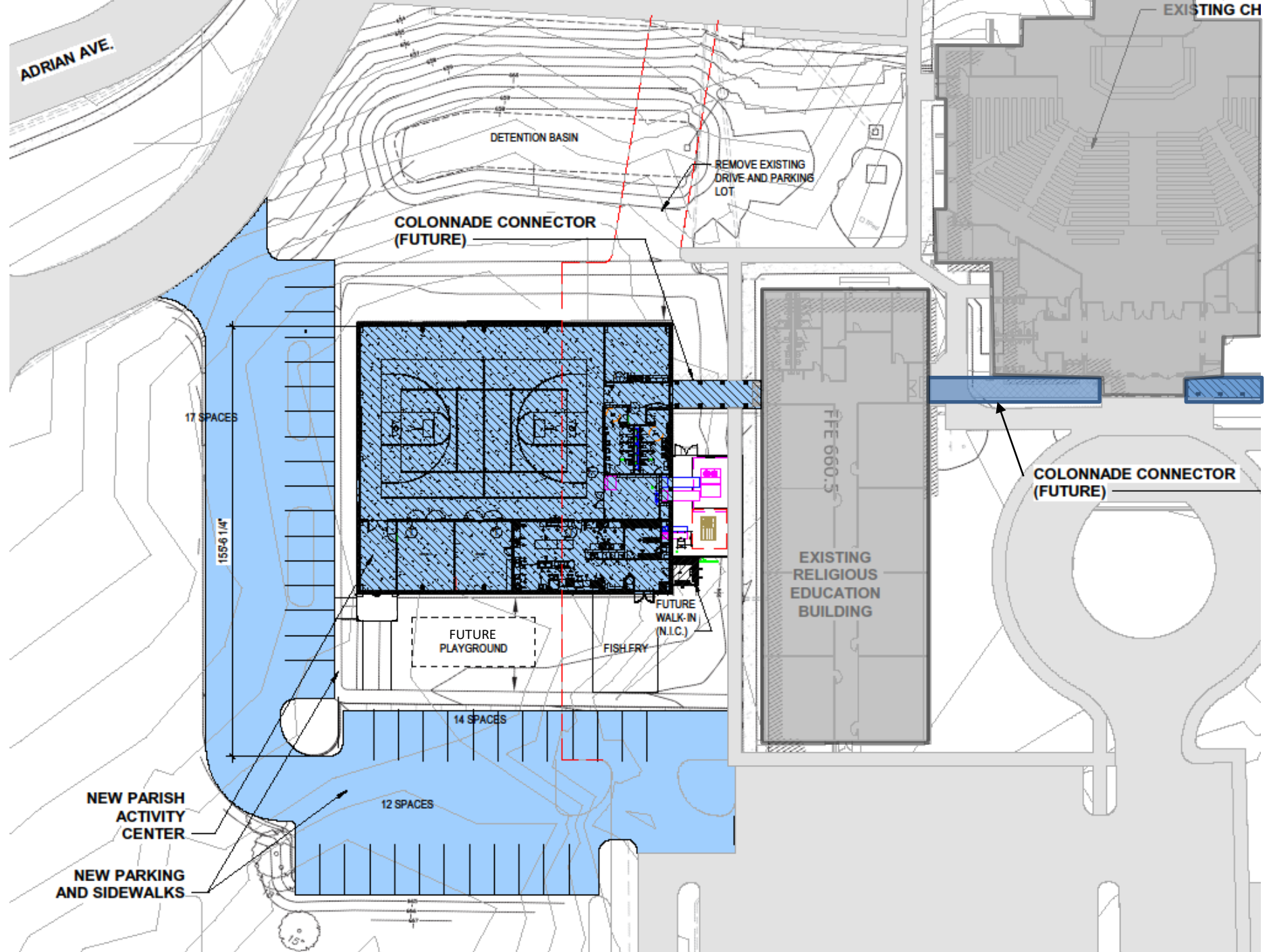
14 SPACES

12 SPACES

NEW PARISH ACTIVITY CENTER

NEW PARKING AND SIDEWALKS

15'





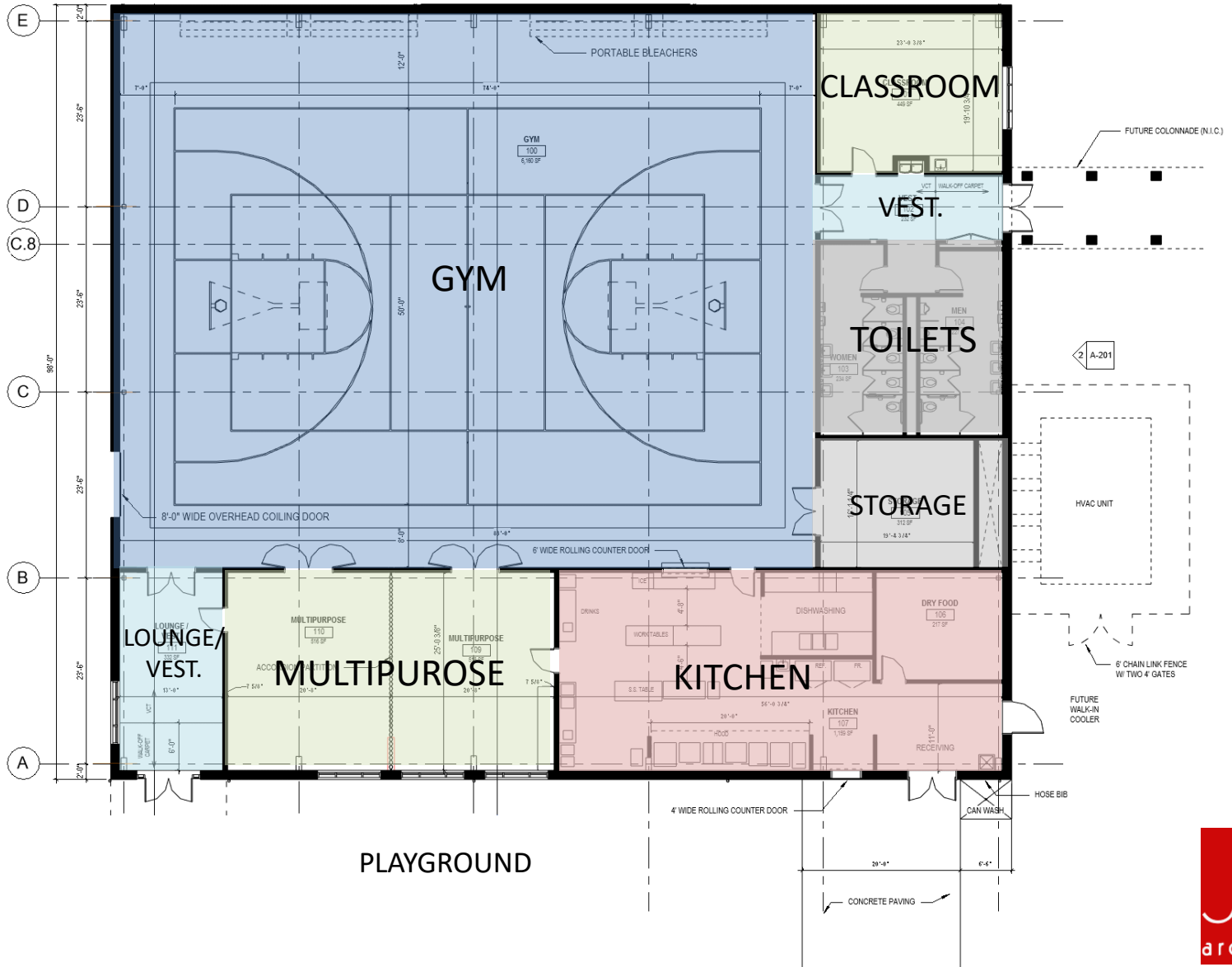
# PAC Features

---

- ❖ 74' x 50' basketball court, striping, retractable glass backboards, electronic scoreboard & wall pads. Volleyball striping & net floor sleeves.
- ❖ Can accommodate a wedding with 300 guests.
- ❖ Commercial kitchen with dishwasher, beverage counter, exterior service window, storage room & provisions for future walk-in freezer. Features a seamless resinous flooring system.
- ❖ Three Multi-Purpose / Classroom spaces.
- ❖ Toilet Rooms with ceramic tile floors & wall wainscot, and solid plastic partitions.
- ❖ Lounge / Vestibule, Storage Room & Toilet Rooms.

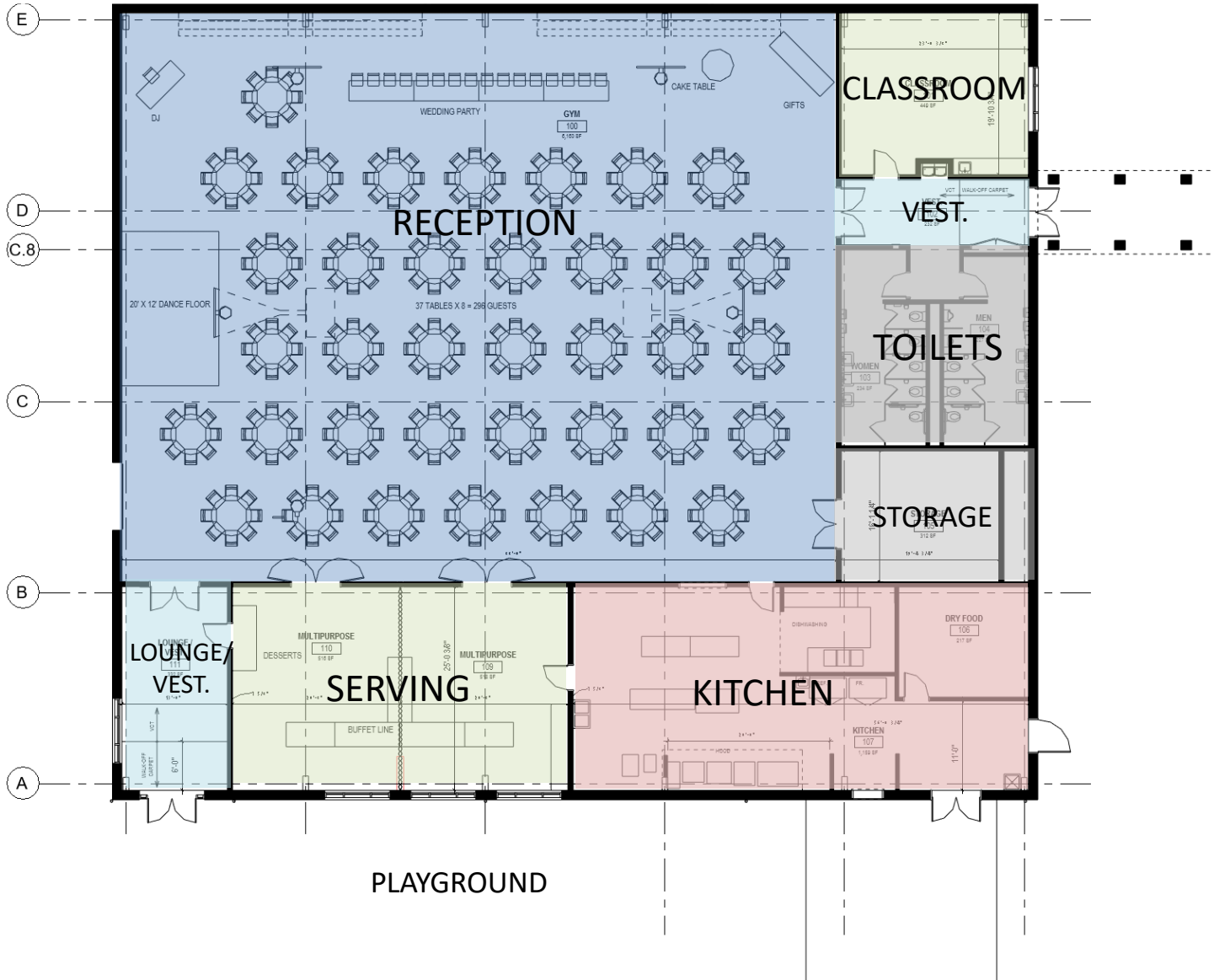


# PAC Floor Plan - Gym

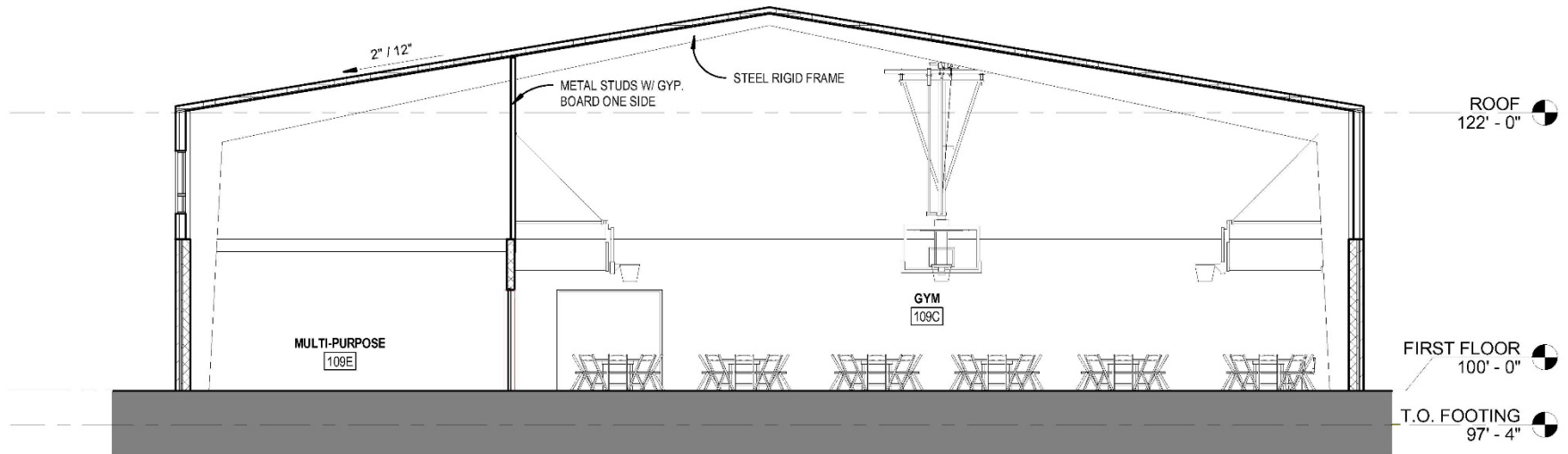




# PAC Floor Plan - Events



# PAC Building Section



**N/S SECTION**

1/8" = 1'-0"





# Aerial View - Before





# Aerial View - After







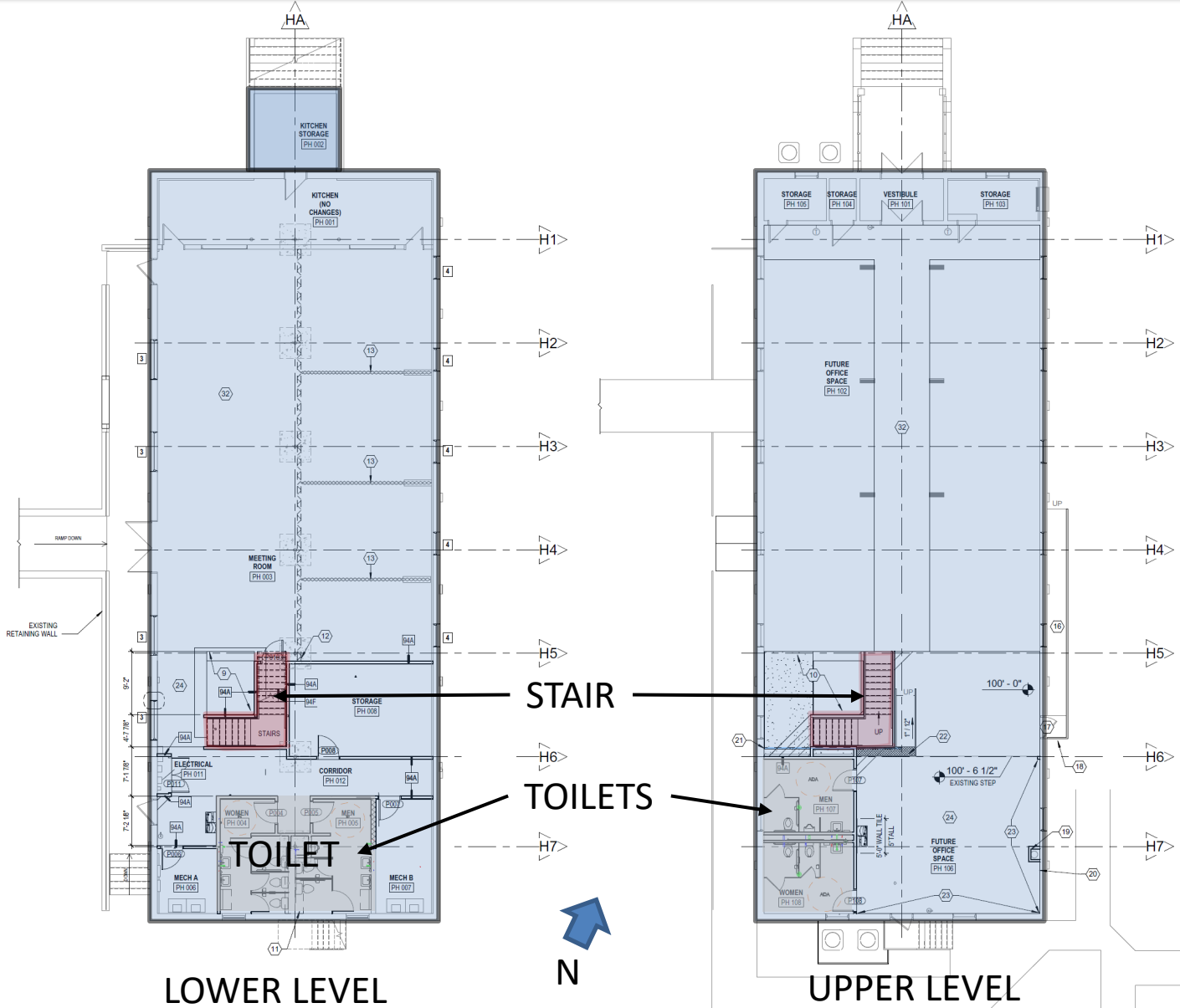
# Parish Hall Renovation

---

- ❖ Current Scope:
  - ❖ Interior Stairs to connect the upper and lower floors.
  
- ❖ Future Scope:
  - ❖ Elevator.
  - ❖ Expand the existing Toilet Rooms on the lower level, all new finishes & fixtures.
  - ❖ New Toilet Rooms on the upper level.
  - ❖ Replace existing windows with insulated windows.
  - ❖ New finishes at south end: acoustical ceilings, vinyl flooring, & wall paint.



# Parish Hall







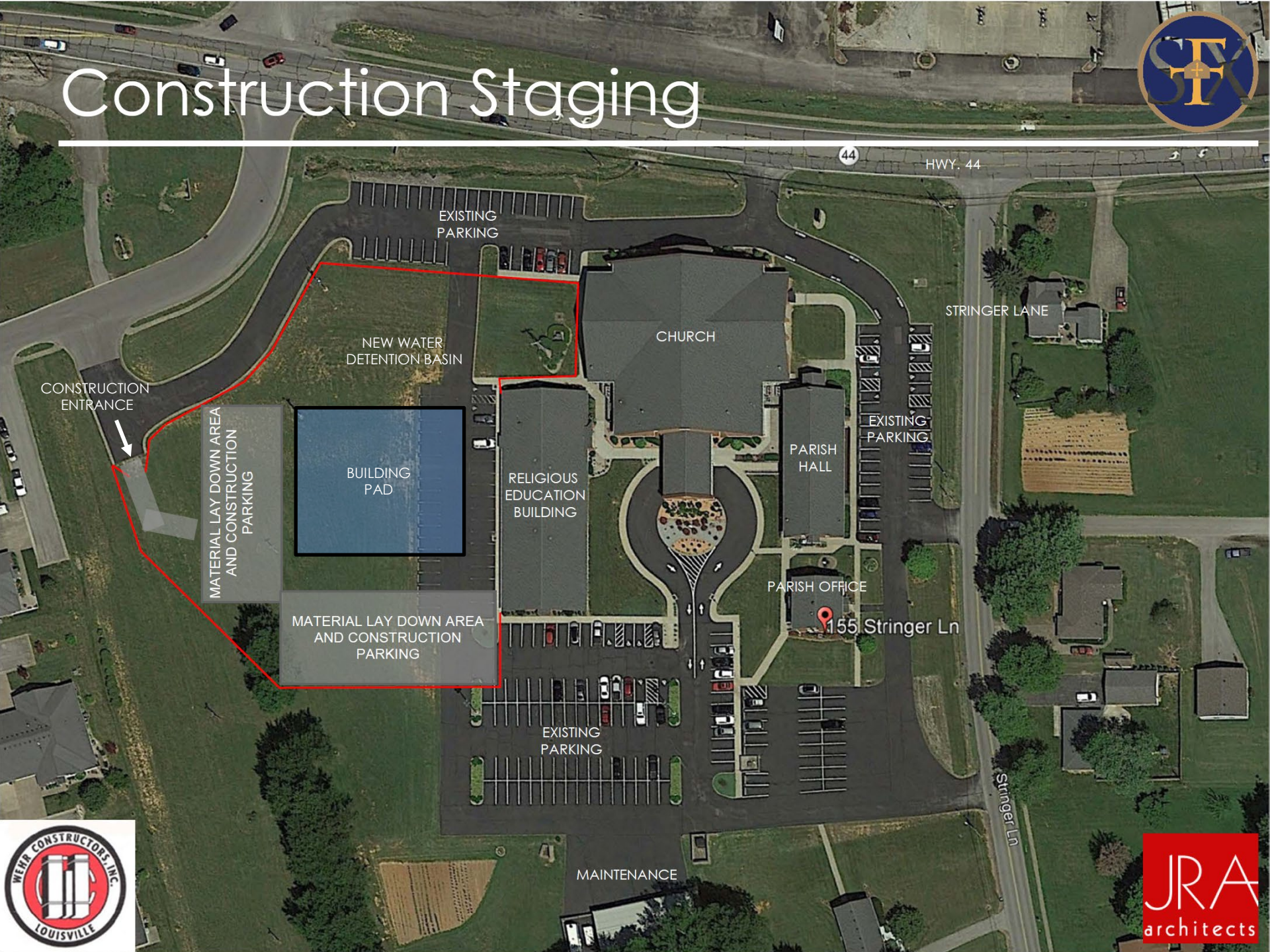
# PAC Construction Schedule

---

- ❖ Groundbreaking Ceremony February 21, 2021
- ❖ Sitework Begins March 1, 2021
- ❖ Foundations & Pad Complete August 10, 2021
- ❖ Building Envelope Complete November 17, 2021
- ❖ Exterior Improvements Complete January 17, 2022
- ❖ Interior Finishes Complete February 7, 2022
- ❖ Grand Opening March 3, 2022



# Construction Staging



44

HWY. 44

STRINGER LANE

EXISTING PARKING

155 Stringer Ln

Stringer Ln

MAINTENANCE

EXISTING PARKING

NEW WATER DETENTION BASIN

CHURCH

PARISH HALL

RELIGIOUS EDUCATION BUILDING

PARISH OFFICE

BUILDING PAD

MATERIAL LAY DOWN AREA AND CONSTRUCTION PARKING

MATERIAL LAY DOWN AREA AND CONSTRUCTION PARKING

CONSTRUCTION ENTRANCE





# Questions / Comments

